

Yokosuka City Community-Based Welfare Plan Summary

2019 - 2023

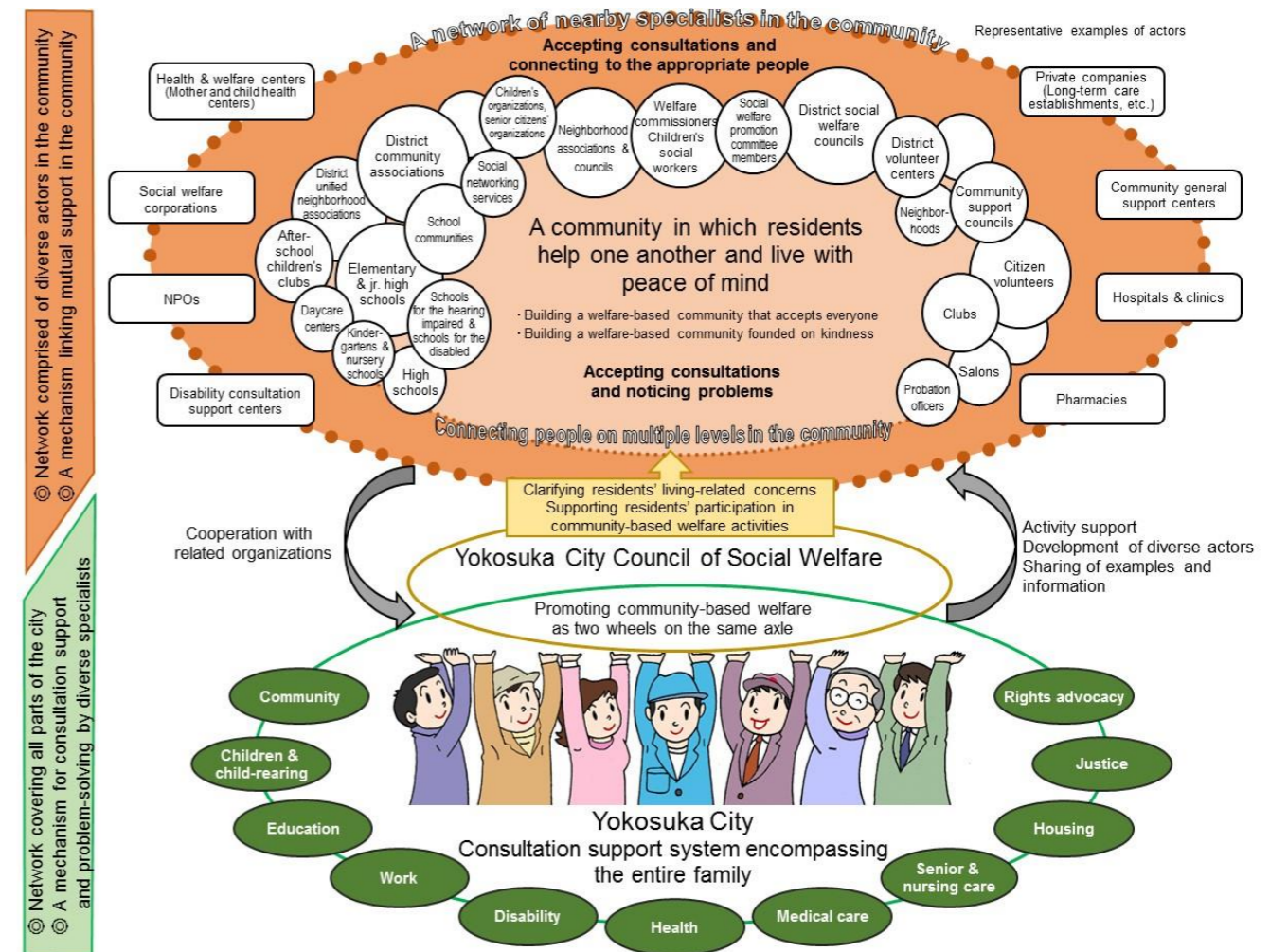
Basic Philosophy

“Yokosuka, a city where no one feels lonely”

Yokosuka aims to be a community in which all residents accept the diversity of their neighbors, are connected within the local society in which they live, and can live with peace of mind while helping one another.

Additionally, the city intends to use the formulation of the Community-Based Welfare Plan as an opportunity to realize its vision of “Yokosuka, a city where no one feels lonely.” This will be achieved by linking the circle of support so that residents will interact with society as members of the community, and so that everyone can pursue their own lifestyles while remaining connected in some way.

Conceptual Image of “Community-Based Welfare” in Yokosuka



Inquiries: Welfare General Affairs Division, Welfare Department, Yokosuka City
11 Ogawa-cho, Yokosuka-shi 238-8550
Tel.: 046-822-8267 Fax: 046-822-2411
E-mail: hwg-hw@city.yokosuka.kanagawa.jp

System Structure

Basic Philosophy: Yokosuka, A City where No One Feels Lonely

Basic Objectives

Policy Directions

Policy Execution

1. Building a welfare-based community that accepts everyone

(1) Stronger mutual-support functions in the community - Making "other people's problems" the community's problems -

We will build a network that accepts all requests for advice (such as concerning issues that are difficult to resolve through existing schemes or by individuals and households that face complex problems and situations), links them to the appropriate support organizations through a partnership with various entities in the community, and finds solutions.

(a) Enhance mutual-support functions in the community

- ⊙ Support the establishment of mutual-support organizations in the community
- ⊙ Support the activities of mutual-support organizations

(b) Strengthen systems whereby community residents look out for each other

- ⊙ Strengthen systems whereby community residents look out for each other

(c) Create a network for community-based welfare activities

- ⊙ Create a network comprised of diverse actors in the community
- ⊙ Support the network's activities

(d) Encourage healthy living/care-prevention activities in the community

- ⊙ Promote healthy living in the community
- ⊙ Promote care-prevention activities

(2) Developing and utilizing diverse actors - Going beyond the boundaries of "supporter" and "recipient" -

We will implement initiatives to expand the base of community actors by promoting welfare education, and build a framework capable of resolving daily life concerns within the community by going beyond the boundaries of "supporter" and "recipient." We will also execute initiatives to train and acquire welfare personnel by, for example, enhancing training for specialists in specific welfare fields.

(a) Develop and utilize community actors

- ⊙ Train actors for mutual-support activities in the community
- ⊙ Promote the education and utilization of volunteers
- ⊙ Improve welfare education within school education

(b) Train and acquire welfare personnel

- ⊙ Train welfare personnel
- ⊙ Acquire welfare personnel
- ⊙ Promote measures to improve the employment environment

(c) Establish disaster volunteer centers

- ⊙ Develop the acceptance mechanisms of disaster volunteer centers

(3) Building a comprehensive support scheme

We will accept concerns that cannot be resolved with community networks and strive to resolve them through a consultation support scheme that encompasses the entire family. We will also support the sharing of cases that led to solutions through a network comprised of diverse entities in the community.

(a) Strengthen the consultation support scheme

- ⊙ Build a community-wide care system for the elderly
- ⊙ Build a community-wide care system for people with mental disability
- ⊙ Develop community living support centers
- ⊙ Develop systems to support children with disability
- ⊙ Develop systems to support children and child-rearing

(b) Study a consultation support scheme that encompasses the entire family

- ⊙ Build a consultation support scheme that encompasses the family

(c) Provide support for achieving autonomy

- ⊙ Provide job assistance for people with disability
- ⊙ Provide learning assistance for children
- ⊙ Support the social rehabilitation of people who have committed crimes

(d) Promote advocacy of rights

- ⊙ Promote education and public awareness of human rights
- ⊙ Take measures to prevent abuse
- ⊙ Promote use of the adult guardianship system

2. Building a welfare-based community founded on kindness

(1) Eliminating psychological barriers

Community-based welfare succeeds when everyone supports one another for the good of all. In light of this, we will strive to eliminate psychological barriers by cultivating kindness toward others and acceptance of diversity. This effort will be based on "social inclusion," a concept that seeks to build mutual recognition of diversity as well as mutual solidarity and connectedness among residents.

(a) Foster kindness toward others

- ⊙ Promote welfare education

(b) Foster awareness in accepting diversity

- ⊙ Provide support for foreigners
- ⊙ Provide support for LGBTs and other sexual minorities

(c) Promote the sending out of information that can be shared easily by everyone

- ⊙ Train sign language interpreters, summary scribes, etc.
- ⊙ Use simple Japanese and easy-to-understand expressions