

# Yokosuka City Community Welfare Plan

## Summary Version

(including the Yokosuka City Basic Plan for Promoting the Use of the Adult Guardianship System and the Yokosuka City Plan for Promoting Recidivism Prevention)

FY2024 to FY2029

### Basic Principle

---

#### Realizing “Yokosuka, a city where no one is left behind”

We will support all residents to enable them to live autonomously as the main characters of their own lives, while embracing diversity.

Additionally, we aim to create a local community where everyone can live with a sense of connection and mutual support, by encouraging residents to engage with society as members of the local community in their daily lives.

To achieve “Yokosuka, a city where no one is left behind,” the city and the Yokosuka City Council of Social Welfare will collaborate with local residents and other local entities to build a circle of support.

### Initiatives for Realization

---

To steadily advance this plan, it is essential to raise awareness and interest in welfare among all residents, who are both beneficiaries and key drivers of local welfare activities.

To achieve this, it is necessary to create an environment where residents, relevant organizations, and the government can connect and collaborate, ensuring that each party actively participates and contributes to activities.

In addition to addressing everyday challenges, the direction of the measures put forth in this plan is for creating a multilayered network where community members can engage with one another face-to-face, an initiative that requires the participation of each resident.

To support this, in addition to progress management and evaluation by the Special Welfare Subcommittee of the Yokosuka City Social Welfare Deliberative Council, we will hold roundtable discussions, etc. in each area to further promote the plan.

- Yokosuka City Social Welfare Deliberative Council

Since this plan is being formulated collaboratively by the city and the Yokosuka City Council of Social Welfare, its evaluation and promotion system must also be integrated.

To achieve this, the Yokosuka City Social Welfare Deliberative Council, as an advisory body for the city’s welfare measures, will comprehensively assess and evaluate the current situation, the methods for promoting measures, etc.

- Regional Roundtable Meetings

As the promotion of this plan relies on the cooperation of various stakeholders, including residents, relevant organizations, and the government, it is essential to incorporate residents’ perspectives in its evaluation.

Therefore, in addition to regional roundtable discussions held by the city and the Yokosuka City Council of Social Welfare, members of both entities will also actively participate in roundtable discussions organized by local residents, and will work to foster connections where people engage with one another face-to-face.

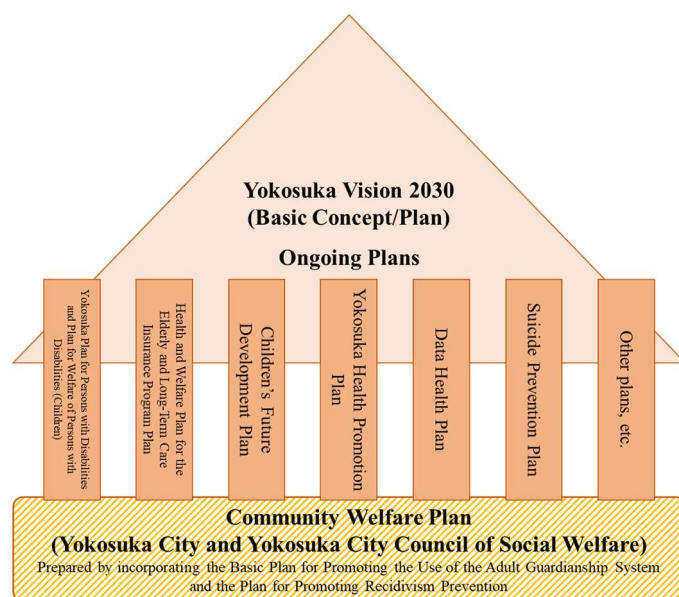
## Positioning of the Plan

- Relationship with Yokosuka Vision 2030 and Other Ongoing Plans

This plan serves as the foundation for each welfare field and is designed to realize the future vision for each field outlined in Yokosuka Vision 2030 of “a city where everyone can live happily as themselves.”

Additionally, it establishes a shared philosophy across all fields, aiming to achieve “a society in which local residents support each other and can live with peace of mind”—an objective set forth in the city’s Proclamation as a Welfare City, the Yokosuka Citizen’s Charter, and the Yokosuka City Community Support Ordinance.

### «Relationship with Other Plans»



### **<<Relationship with Individual Welfare Field Plans>>**

This plan incorporates the Yokosuka City Basic Plan for Promoting the Use of the Adult Guardianship System and the Yokosuka City Plan for Promoting Recidivism Prevention as foundational plans for individual welfare fields, such as elderly welfare, disability welfare, and child welfare. Additionally, it outlines the direction of each measure, including promoting the creation of a foundation for mutual support within the community, enhancing comprehensive and continuous support systems, encouraging the development and participation of diverse supporters, and fostering a barrier-free mindset.

- Relationship with the Community Welfare Action Plan

The Yokosuka City Community Welfare Plan, formulated by the city, and the Community Welfare Action Plan, formulated by the Yokosuka City Council of Social Welfare, have been developed as a unified framework.

By clearly defining their respective roles and promoting community involvement, these plans are expected to generate a synergistic effect—such as facilitating the examination of how support should be provided to address the unique challenges faced by each community.

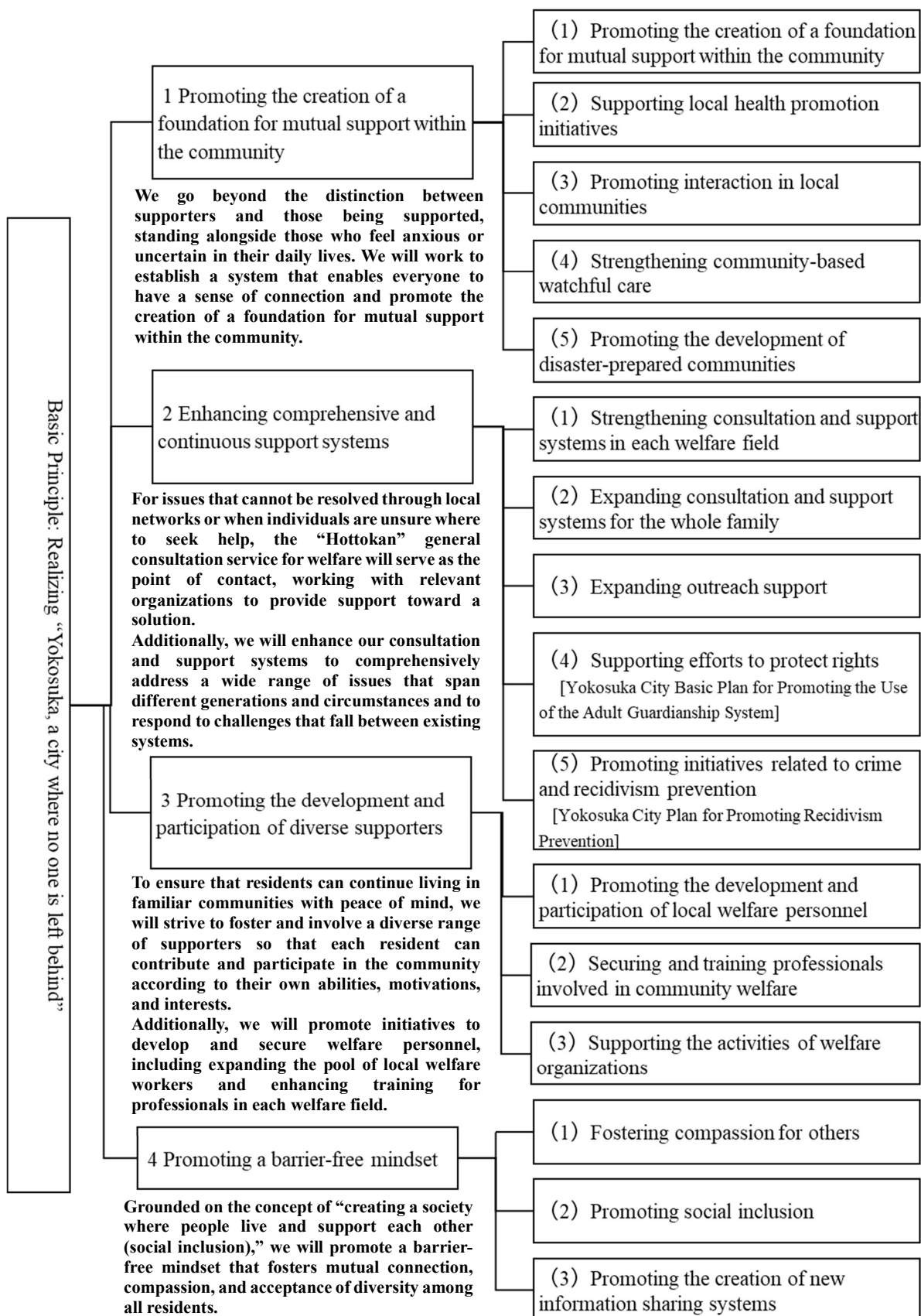
FY 2018	FY 2019	FY 2020	FY 2021	FY 2022	FY 2023	FY 2024	FY 2025	FY 2026	FY 2027	FY 2028	FY 2029
<p><b>Yokosuka City Community Welfare Plan</b> (including the Yokosuka City Basic Plan for Promoting the Use of the Adult Guardianship System)</p>						<p><b>Yokosuka City Community Welfare Plan</b> (including the Yokosuka City Basic Plan for Promoting the Use of the Adult Guardianship System and the Yokosuka City Plan for Promoting Recidivism Prevention)</p>					
<p><b>Fifth Community Welfare Action Plan</b> [formulated by the Yokosuka City Council of Social Welfare]</p>						<p>Formulation of next-term plan Understanding the current situation Mid-term review</p>					

## Structure of the Plan

This plan serves as the foundation for welfare as a whole, providing a framework that organizes common issues across different welfare fields under the key concept of “community welfare.”

This plan will advance various projects while complementing and integrating with other individual plans.

### «Structure Diagram of the Plan»



## Background of the Plan's Formulation

The government has been working to enhance public support systems for various groups, including the elderly, people with disabilities, and children. However, challenges across different welfare fields have become increasingly complex due to overlapping issues such as “double care,” the “8050 problem,” and “young carers.” Additionally, social issues like isolation due to social withdrawal or refusal of support, as well as abuse and violence, have been on the rise.

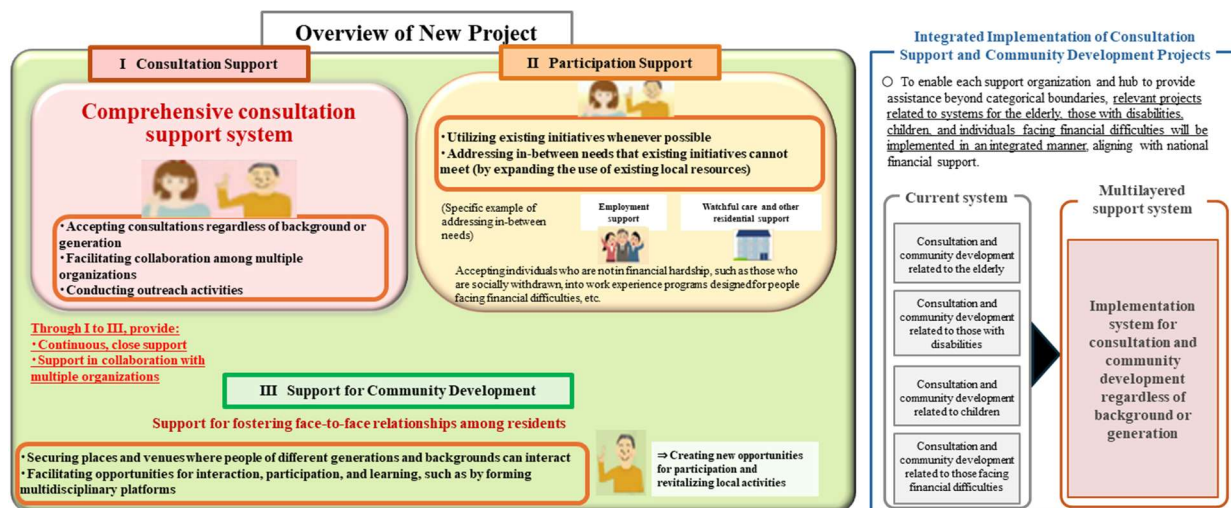
Faced with a variety of issues and given the way local communities are changing, we collaborated with the Yokosuka City Council of Social Welfare, which plays a central role in local welfare, to formulate this plan. Our vision is to create a city where residents support one another and can continue living comfortably and with peace of mind in the communities they are familiar with.

### ●● Multilayered Support System Development Project ●●

The Multilayered Support System Development Project is a project that aims to establish a comprehensive support system to address the increasingly complex and overlapping “in-between needs” of local residents. This project integrates five projects under the three pillars of “consultation support,” “participation support,” and “support for community development.” Additionally, it strengthens the new functions of “ongoing support through outreach, etc.” and “support through collaboration between multiple organizations” to ensure effective and seamless implementation.

In our city as well, discussions are underway to implement this project in alignment with the vision set out in this plan—creating local communities where residents support one another and can continue living comfortably and with peace of mind in the communities they are familiar with.

This project also aims to build relationships of trust and foster connections with the people concerned through sustained support. This includes supporting families with complex needs—such as those affected by the “8050 problem”—who are not receiving adequate support by carrying out measures like conducting continuous home visits and accompanying them to medical institutions, as well as providing support for creating community spaces where people of all ages and backgrounds, including the elderly, people with disabilities, and children, can come together.



From the Ministry of Health, Labor and Welfare's “Portal Site for a Community-based Integrated Care System”

#### Yokosuka City

Address Welfare General Affairs Division, Welfare and Children's Services Department, Citizen's Health and Welfare Bureau (民生局福祉子ども部福祉総務課) 11 Ogawa-cho, Yokosuka-shi 238-8550  
Tel 046-822-8245  
Fax 046-822-2411  
E-mail hwg-hw@city.yokosuka.kanagawa.jp

#### Yokosuka City Council of Social Welfare

Address Yokosuka City Sogo Fukushi Kaikan Hall, 2F (横須賀市立総合福祉会館 2 階), 2-1 Honcho, Yokosuka-shi 238-0041  
Tel 046-821-1301  
Fax 046-827-0264  
E-mail yokosuka-shakyo@yokosuka-shakyo.or.jp